



WorldTech

LOADCELL

www.เครื่องชั่งรถบรรทุก.net



Model: LT - 30-40 t. Series

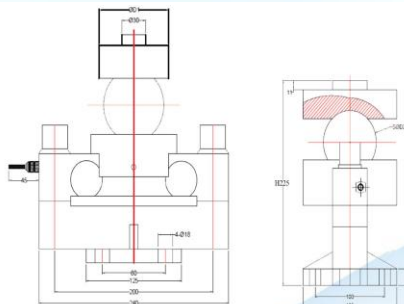
Loadcell Truck scale



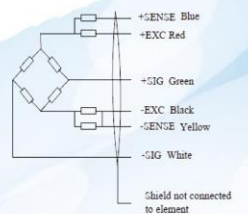
SPECIFICATIONS

Capacity	30,000 Kg. / 40,000 Kg.
Signal output	30000 Division
Total error	+/- 0.02 % FS.
Creep (30min.)	+/- 0.02 % FS.
Zero balance	+/- 0.1 % FS.
Temperature effect	+/- 0.02 % FS.
Baud rate	9,600 bps
Maximum transmission	1,000 m.
Operating temperature	-30 to +70° C
Safe load limit	150% of Capacity
Overload limit	300% of Capacity
Recommend excitation	9 – 12 VDC
Maximum excitation	20 VDC
Protection class	IP68
Casing	Alloy steel

All specifications listed subject change without notice.



Color code of cable



Capacity	10t	20-30t	40-50t
Dimension			
H	195	225	267
S Ø	50	76	82

Specifications subject to change without notice